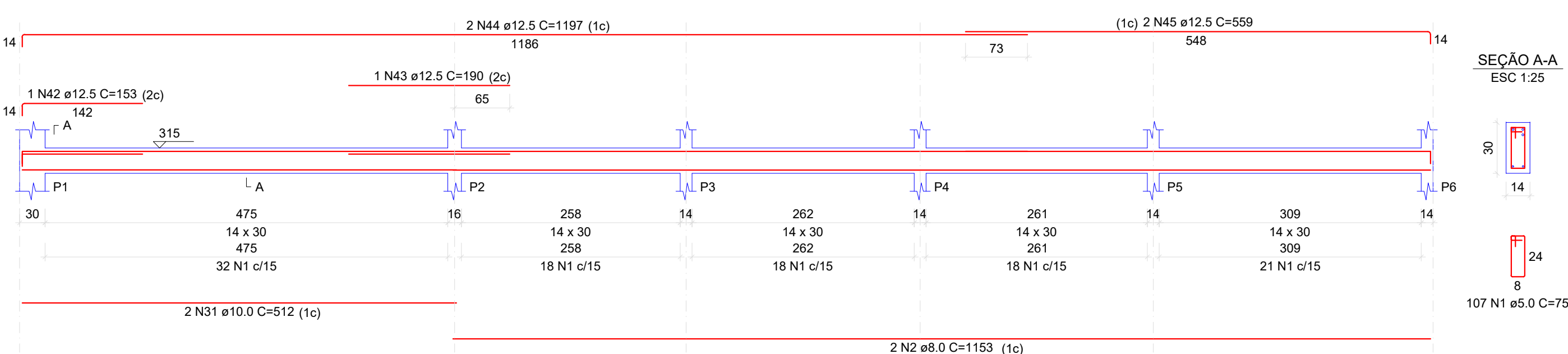
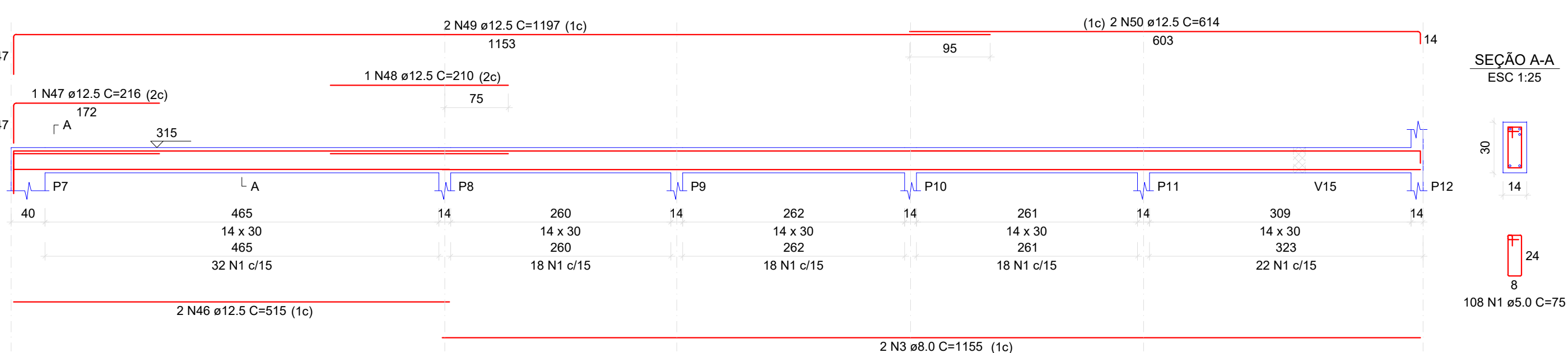


V1
ESC 1:50



V2
ESC 1:50

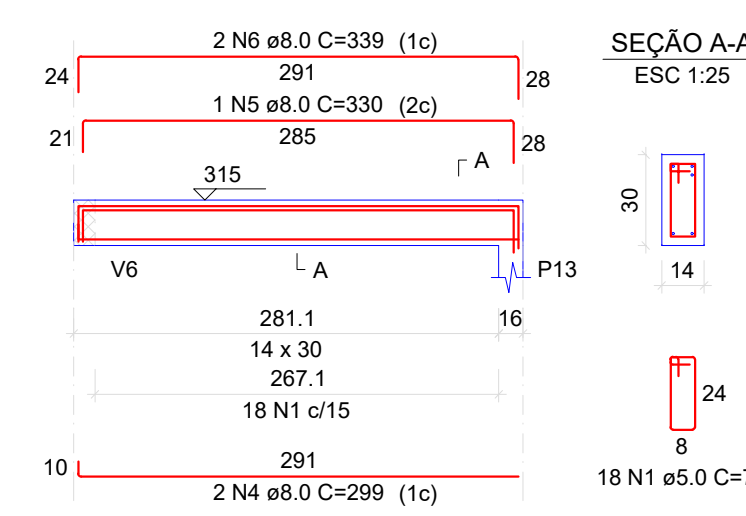


RELAÇÃO DO AÇO					
ACO	N	DIA	QUANT	C.UNIT	C.TOTAL
CA50	1	5.0	721	75	54075
CA50	2	8.0	2	1153	2306
CA50	3	8.0	2	1155	2310
CA50	4	8.0	2	259	588
CA50	5	8.0	2	330	330
CA50	6	8.0	2	339	678
CA50	7	8.0	2	230	230
CA50	8	8.0	2	1006	2012
CA50	9	8.0	2	290	580
CA50	10	8.0	2	1005	2010
CA50	11	8.0	2	282	564
CA50	12	8.0	2	605	1210
CA50	13	8.0	2	1200	2400
CA50	14	8.0	2	245	490
CA50	15	8.0	2	587	1174
CA50	16	8.0	2	399	798
CA50	17	8.0	2	439	878
CA50	18	8.0	2	139	278
CA50	19	8.0	2	439	878
CA50	20	8.0	2	953	1906
CA50	21	8.0	2	422	844
CA50	22	8.0	2	970	1940
CA50	23	8.0	1	225	225
CA50	24	8.0	2	352	704
CA50	25	8.0	4	374	1496
CA50	26	8.0	2	410	820
CA50	27	8.0	2	385	770
CA50	28	8.0	2	398	796
CA50	29	8.0	2	221	442
CA50	30	8.0	2	255	510
CA50	31	10.0	2	512	1024
CA50	32	10.0	1	191	191
CA50	33	10.0	2	602	1204
CA50	34	10.0	1	133	133
CA50	35	10.0	2	409	818
CA50	36	10.0	2	374	748
CA50	37	10.0	2	415	830
CA50	38	10.0	2	410	820
CA50	39	10.0	2	405	810
CA50	40	10.0	2	390	780
CA50	41	10.0	2	153	306
CA50	42	12.5	1	190	190
CA50	43	12.5	2	1197	2394
CA50	44	12.5	2	659	1318
CA50	45	12.5	2	515	1030
CA50	46	12.5	2	216	432
CA50	47	12.5	1	210	210
CA50	48	12.5	2	1157	2314
CA50	49	12.5	2	1157	2314
CA50	50	12.5	2	614	1228
CA50	51	12.5	2	1197	2394
CA50	52	12.5	2	250	500

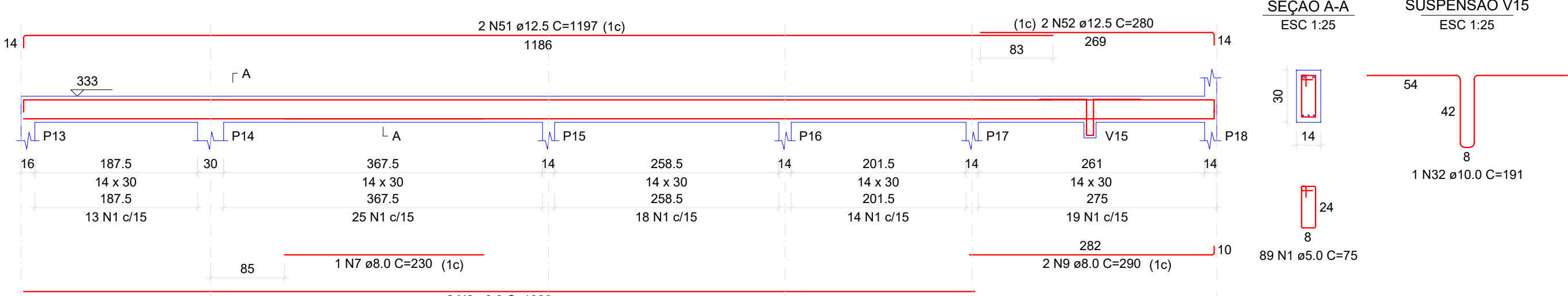
RESUMO DO AÇO			
ACO	DIA	C.TOTAL	PESO + 10%
CA50	8.0	315.7	13.7
CA50	10.0	62.8	62.9
CA50	12.5	118.9	126
CA50	5.0	540.8	91.7
PESO TOTAL (kg)		325.9	
CA50		325.9	
CA60		91.7	

Volume de concreto (C-25) = 4.44 m³
Área de forma = 59.99 m²

V3
ESC 1:50



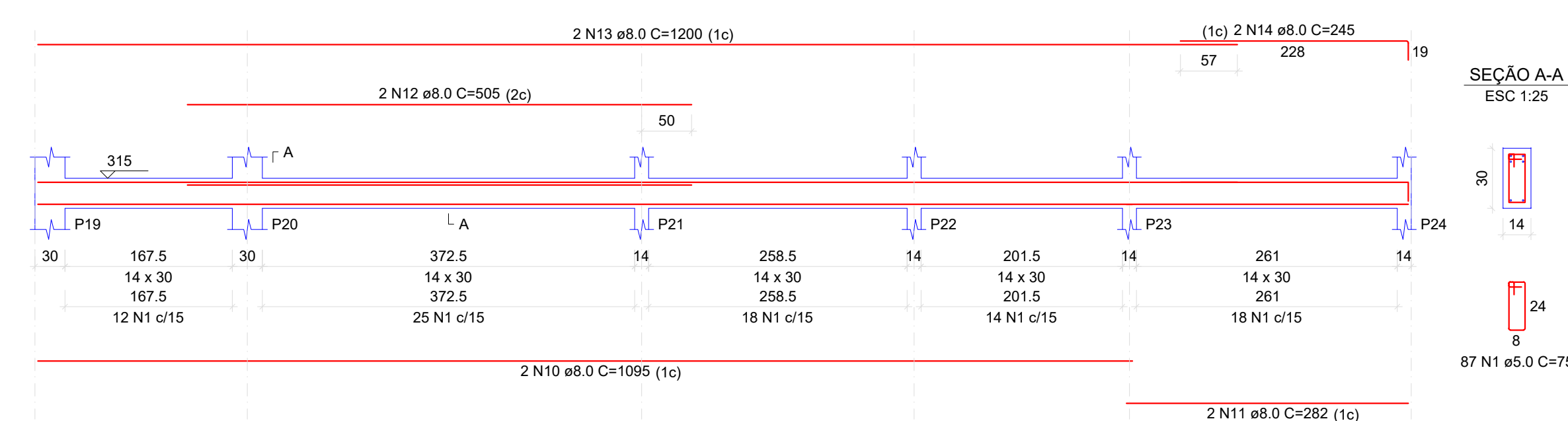
V4
ESC 1:50



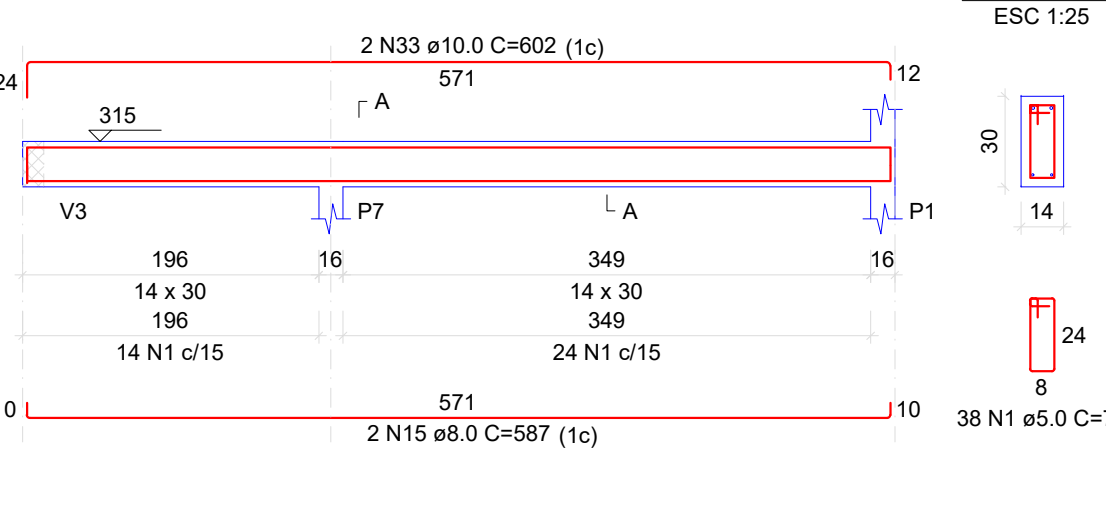
SUSPENSÃO V15
ESC 1:25



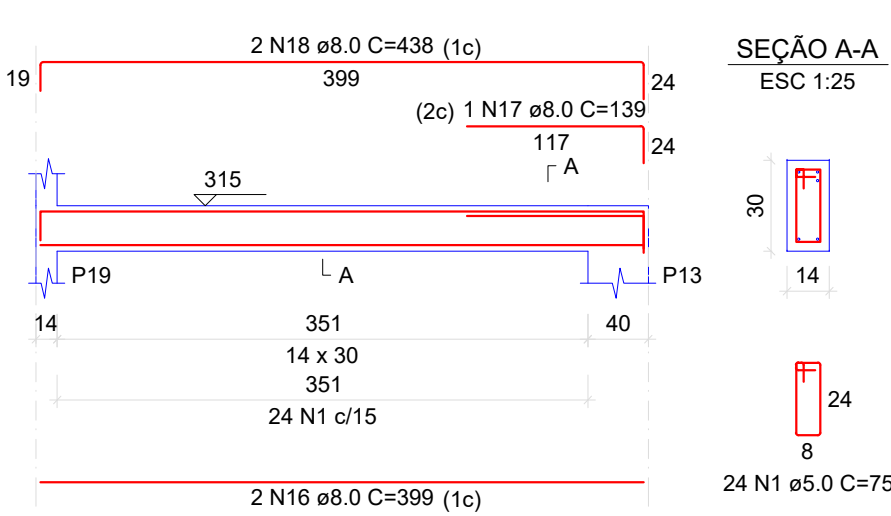
V5
ESC 1:50



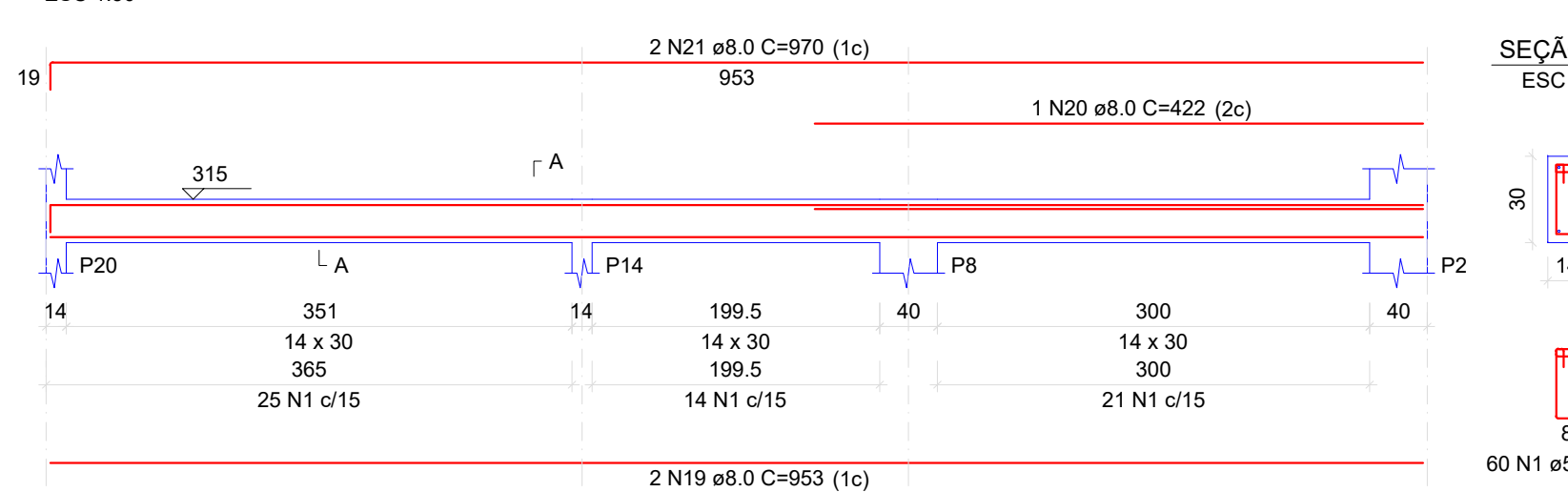
V6
ESC 1:50



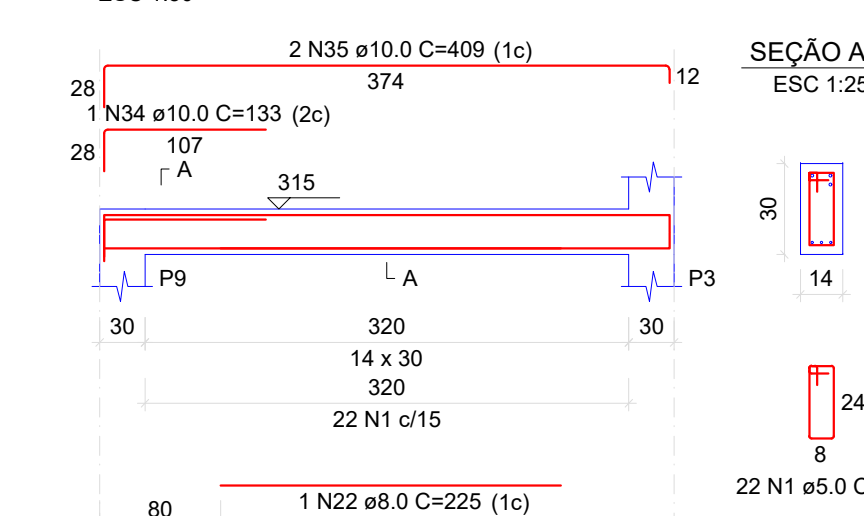
V7
ESC 1:50



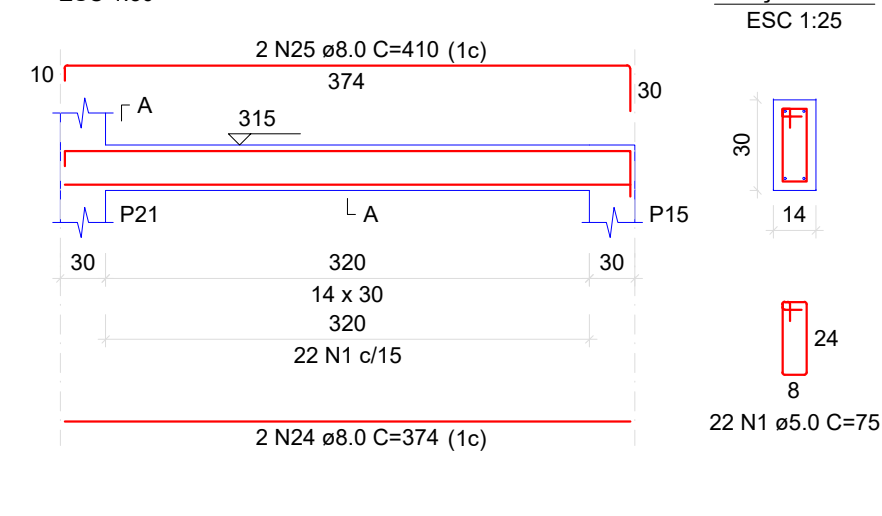
V8
ESC 1:50



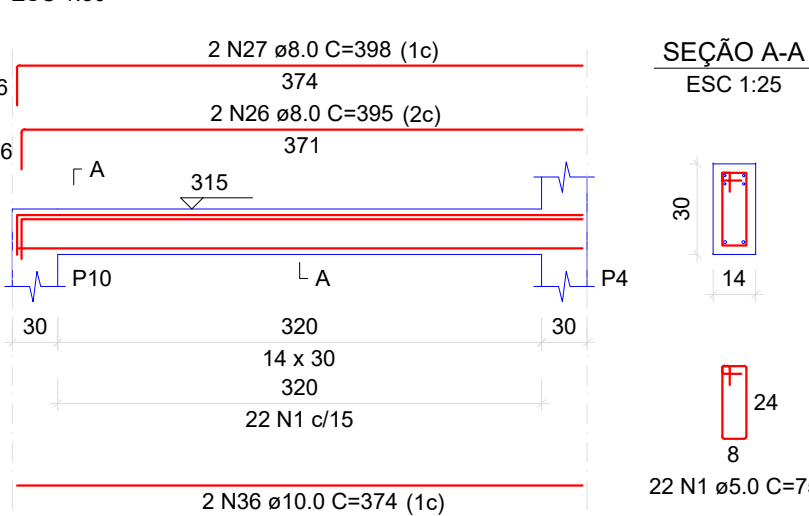
V9
ESC 1:50



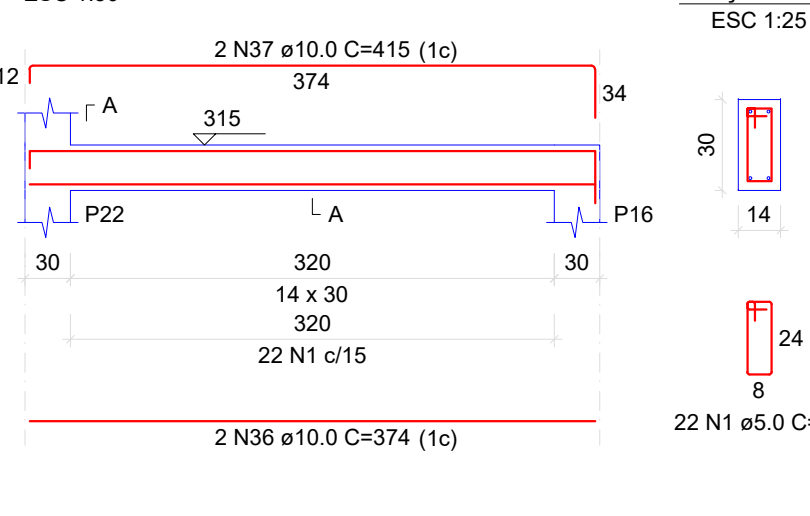
V10
ESC 1:50



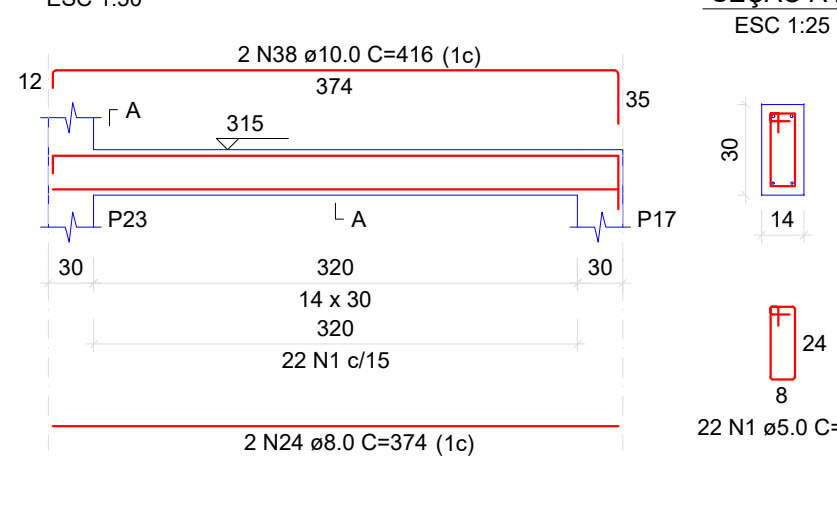
V11
ESC 1:50



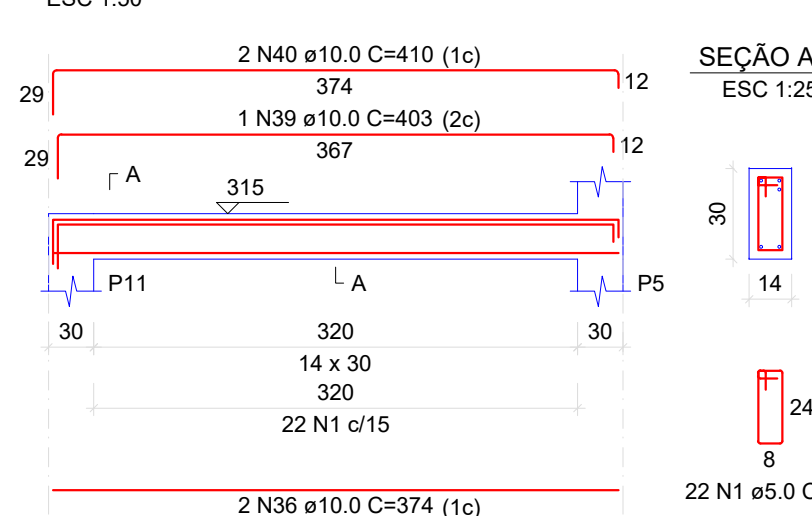
V12
ESC 1:50



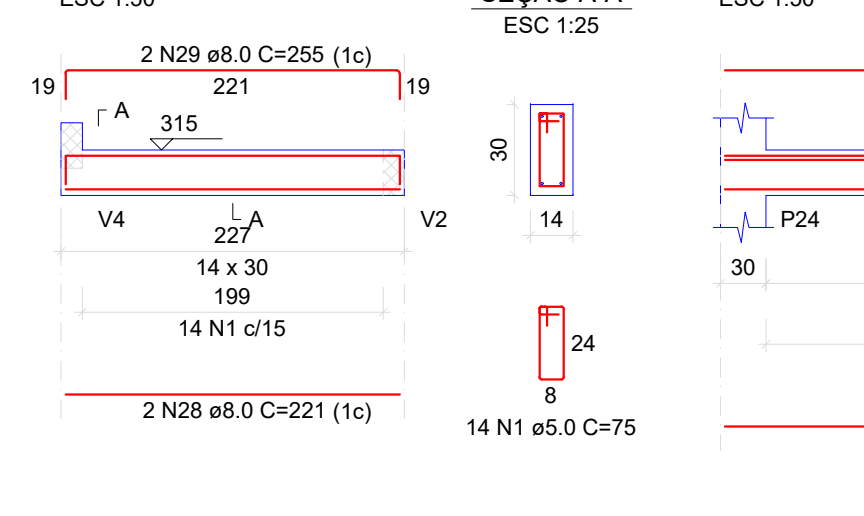
V13
ESC 1:50



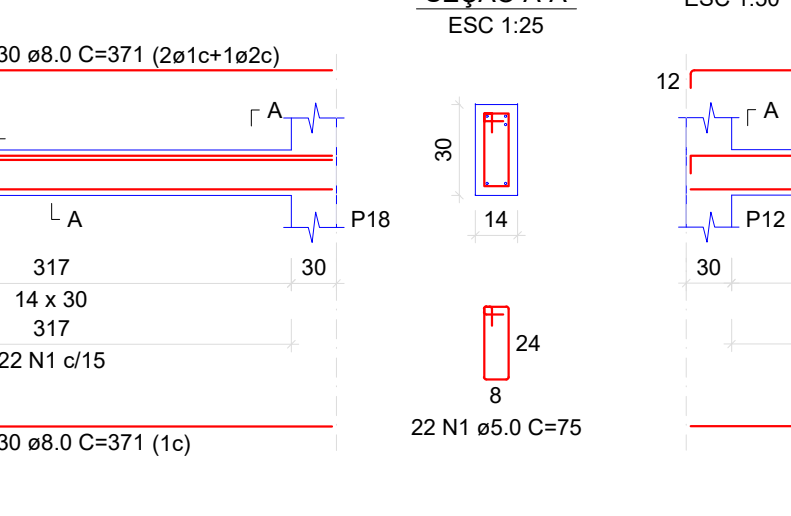
V14
ESC 1:50



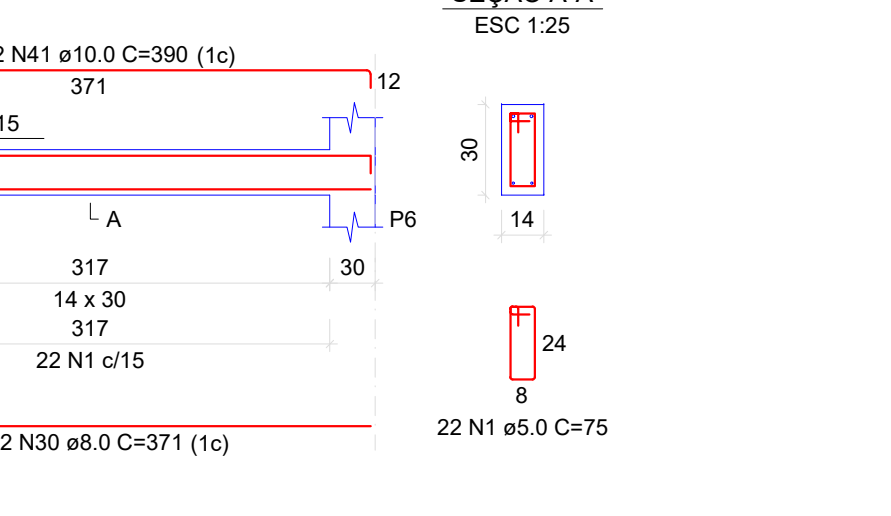
V15
ESC 1:50



V16
ESC 1:50



V17
ESC 1:50



CARIMBO DE APROVAÇÕES :



TIPO DE USO : UNIDADE BÁSICA DE SAÚDE - UBS

ENDEREÇO DA OBRA : RUA TENENTE CORONEL JOÃO DE CERQUEIRA NETTO 4º ÁREA

PROPRIETÁRIO :

PREFEITURA MUNICIPAL DE CATALÃO CNPJ nº: 01.505.643/0001-50

AUTOR DO PROJETO :

LEONARDO MARTINS DE CASTRO TEIXEIRA CREA nº: 74550-D-00

RESPONSÁVEL TÉCNICO :

LEONARDO MARTINS DE CASTRO TEIXEIRA CREA nº: 74550-D-00

DESCRIÇÃO :

VIGAS LAJE GERAL VER - ARQUITETÔNICO

AREAS :

JUNTA B

ESCALA :

INDICADAS

DATA :

Setembro/2024

DESENHO :

REVISÃO :

03/05